

In addition to the demands from shareholders, employees and customers, shipping companies must also meet the requirements of IMO, rules and regulations from national administrations and classification societies.

The Star systems help improve safety through:

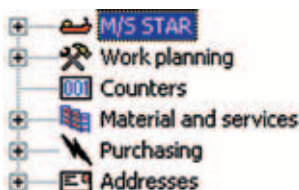
- Improved maintenance & condition control
- Better contingency planning & handling
- Better follow-up of accidents & near accidents
- Better follow-up of non-conformities
- More precise ship – shore data replication
- Improved quality on information for management & operation

Shipping companies invest in modern IT solutions to reduce cost, to improve safety and to increase profit. The Star systems play important roles in achieving:

- Reduced off-hire
- Better documentation for claims & settlements
- Reduced insurance premium
- Reduced maintenance cost
- Optimized spare part inventory & consumption
- Better business to business e-commerce
- Reduced communication cost
- Reduced repair yard bills
- Increased second hand value
- Improved environmental protection
- Professional IT environment
- Compliance with ISM and ISPS code requirements

Star Maintenance

A USER FRIENDLY SYSTEM FOR SHIP MAINTENANCE MANAGEMENT



Star Maintenance is often the first step in vessel and fleet management software. The system may be expanded to include more functions according to user's requirements. The system comprises the basic modules for maintenance work planning and spare part handling. It may be used as a stand alone system on board or be used in close data replication with a Star Fleet Management System on shore.



The system is designed to help ship management to:

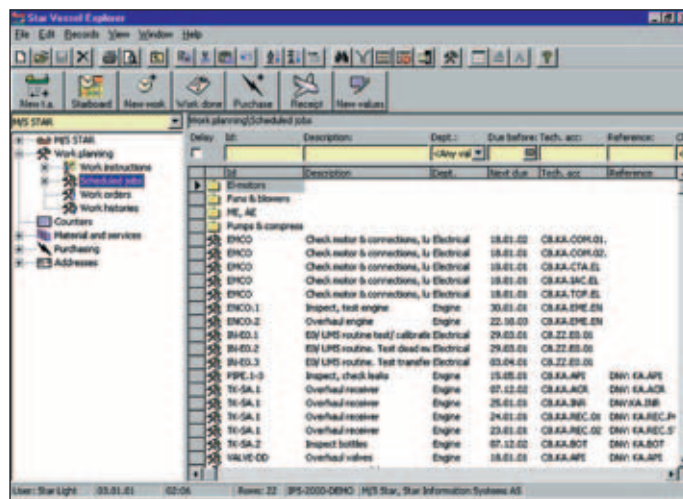
- Plan preventive & corrective maintenance work
- Plan repair and docking
- Report work done
- Issue requisitions
- Keep stock & handle supplies
- Control plant inventory
- Replicate data between ship & shore

Easy to use

The system applies standard user interface and standard tool bar icons.

Quick keys are available for fingertip control of all main functions.

The system uses wizards for planning and reporting. Ship and office personnel will be guided in accordance with company rules when entering data into the system.



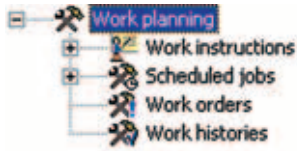
* Star Vessel Explorer with Maintenance modules *



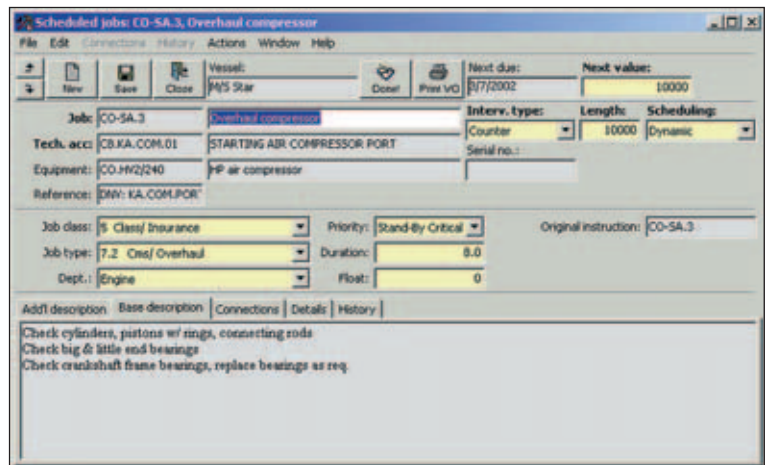
Cert. No M-PMS-8639

Star Maintenance

Work planning



Star Maintenance may use standard work instructions which become scheduled jobs when connected to a technical account.



* Scheduled job *

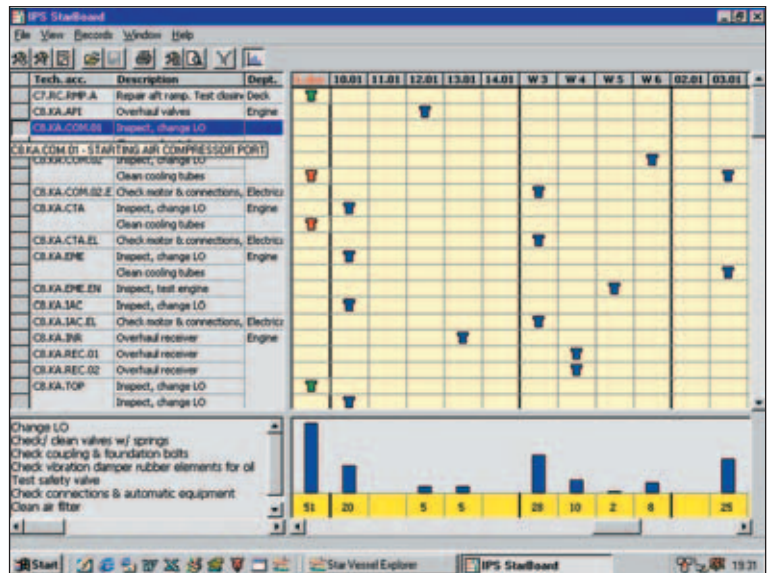
Planning board

Most of the work in Star Maintenance will be carried out from the planning board. From the planning board it is possible to look up work instructions, technical account and job histories, and to print work orders, report work done, as well as issue requisitions or purchase orders.

Material & services



Star Maintenance may be used for direct purchases of material and services from vendors, or to issue requisitions for Star Central Purchasing System. The system is the on board link to SISCommerce B2B with the suppliers.



* Star planning board *

Technical Data

Star Maintenance can be run on Windows 98/2000/NT/XP workstations. The program uses SQL databases like Oracle, MS SQL Server, or Sybase.

For more information about this or any other Star Information Systems' products, please contact your local distributor or one of Star Information Systems' offices.



Star Information Systems AS

www.sismarine.com

Main office

Kjøpmannsgaten 35
NO-7011 Trondheim, Norway
Tel: +47 73 87 62 00
Fax: +47 73 87 62 19
E-mail: company@sismarine.com

Sales office

Stortorvet 5
NO-0155 Oslo, Norway
Tel: +47 22 47 69 10
Fax: +47 22 47 69 19
E-mail: sales@sismarine.com