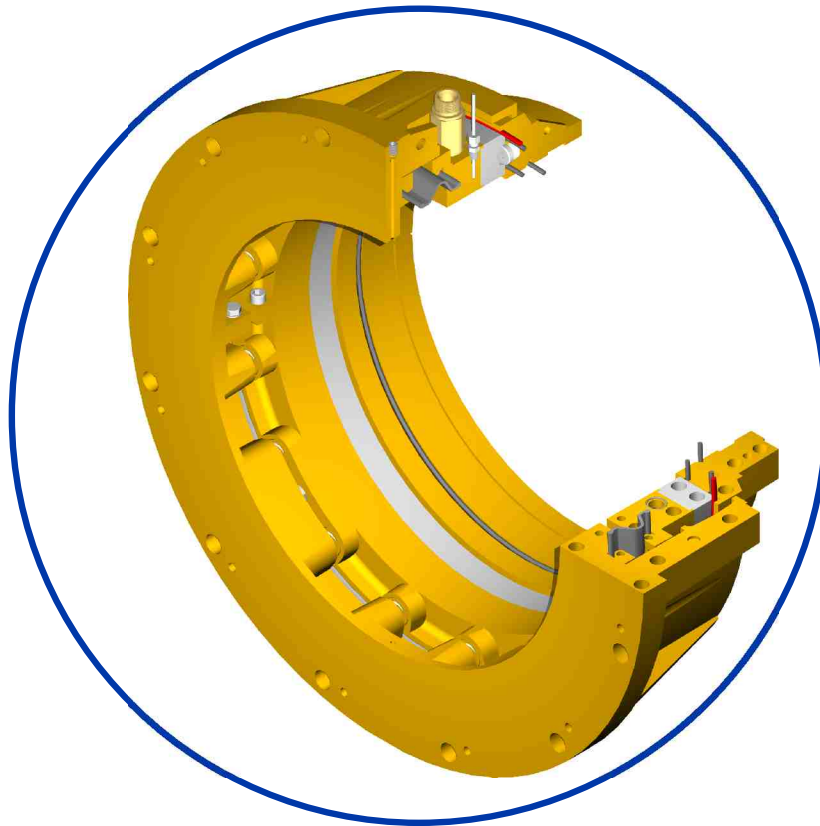


Cedervall forward split oil lubricated stern-tube seal type SeaQual



General

The **SeaQual** seal is an oil lubricated face seal for propeller shafts. In a face seal the sealing is achieved by combining two lapped rings, stator and rotor. To prevent oil from penetrating between the sealing faces pressure is added using pressure springs. The face seal principle offers a durable solution, suitable for the harsh working conditions of propeller shafts.

Execution

The **SeaQual** seal is available in two versions split and retrofit version for shaft diameters ranging from 200 to 1200mm. Both versions comply with requirements for 15 years propeller shaft survey.

The exploded view on page 2 represents the retrofit version where all parts are split to enable installation without removal propeller shaf. In the split version parts 1 and 7 are manufactured non-split. Materials for **SeaQual** are selected to achieve maximum performance throughout the vessel lifetime.

Optional items:

SeaQual can as option be equipped with a standard PT-100 sensor for monitoring of the operating temperature.

Ratings:

Shaft diameter:	200-1200mm
Periphery speed:	max 10 m/s
Lubricant:	Oil (see recommendation)
Oil pressure:	max 2.5 Bar
Operating temperature	-5 to 65 °C
Shaft elongation:	max 10 mm

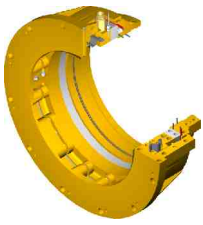
Cooling:

Coolant	Water
Pressure	max 5 Bar
Flow	min 20 l/min
Inlet temperature	max 38°C

Maintenance:

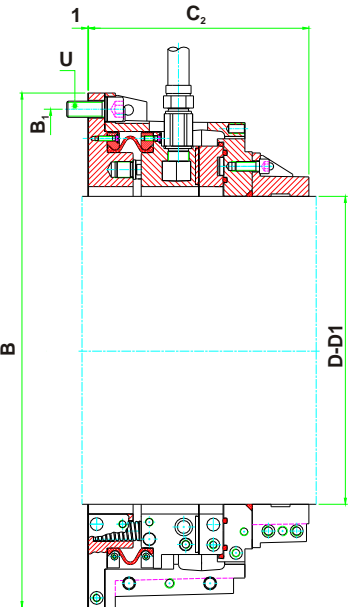
The **SeaQual** seal is designed for a 5-year maintenance interval, which represents a normal docking period. During a scheduled maintenance parts marked with (1) in the part list are shifted out. This type of maintenance does not require removal of the propeller shaft.

For technical specification, see back-cover of this leaflet.



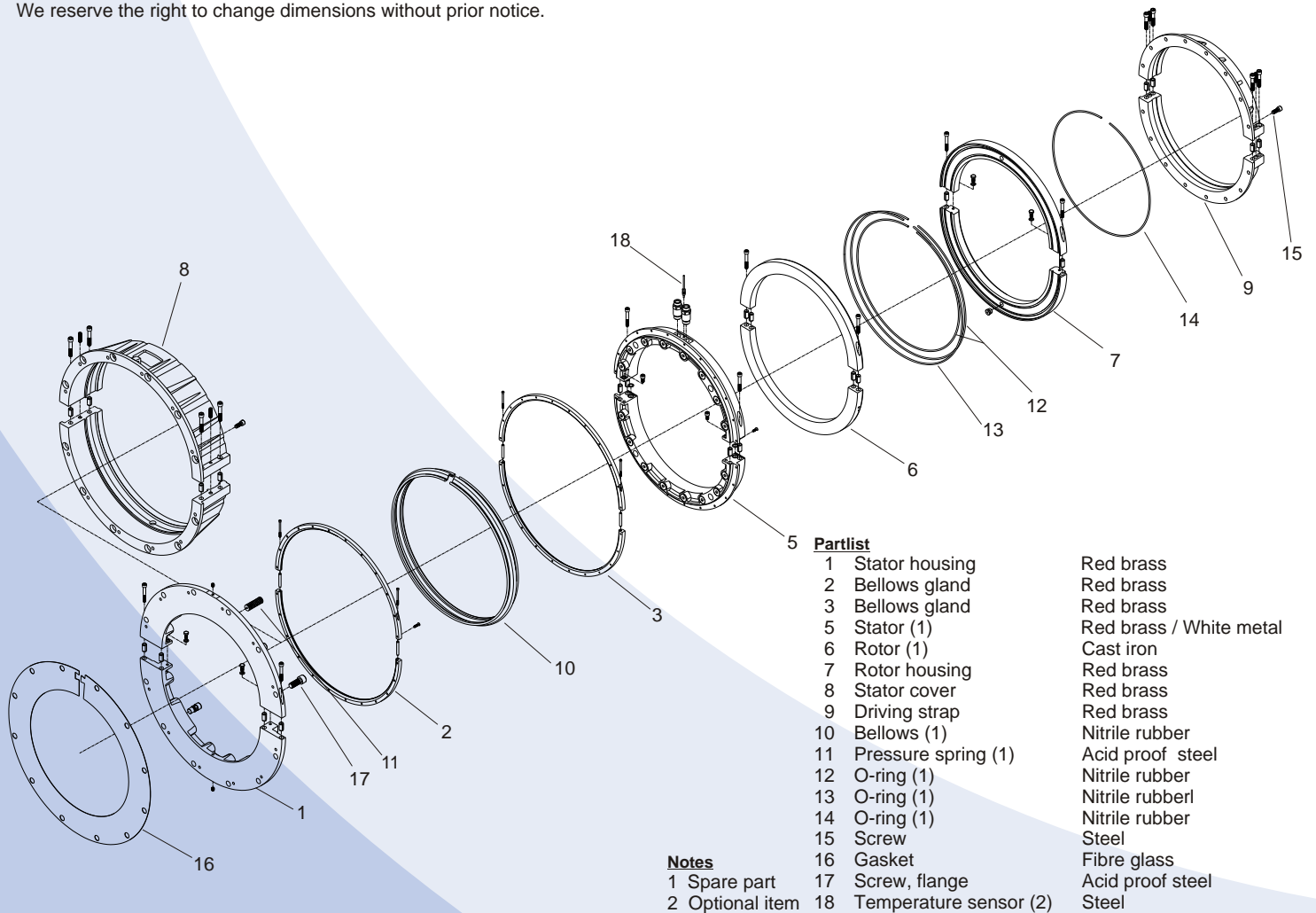
Cedervall forward split oil lubricated stern-tube seal type SeaQual

Size	D	D ₁	B	B ₁	C ₂	U	Size	D	D ₁	B	B ₁	C ₂	U
7	205	228	442	414	261	8 x M12	25	555	573	820	780	272	12 x M20
8	229	246	460	432	261	8 x M12	26	574	592	840	800	277	12 x M20
9	247	264	478	450	261	8 x M12	27	593	611	860	820	277	12 x M20
10	265	283	510	475	261	8 x M16	28	612	630	875	835	277	12 x M20
11	284	302	530	495	261	8 x M16	29	631	649	895	855	277	12 x M20
12	303	321	565	525	268	8 x M20	30	650	668	915	875	277	12 x M20
13	322	339	580	540	268	8 x M20	31	669	687	935	895	277	16 x M20
14	340	358	600	560	268	10 x M20	32	688	706	955	915	277	16 x M20
15	359	377	620	580	268	10 x M20	33	707	734	1010	970	--	16 x M20
16	378	396	640	600	268	10 x M20	34	735	764	1060	1015	--	16 x M24
17	397	415	655	615	268	10 x M20	35	765	794	1090	1045	--	16 x M24
18	416	432	675	635	268	10 x M20	36	795	824	1120	1075	--	16 x M24
19	433	451	695	655	268	10 x M20	37	825	854	1150	1105	--	16 x M24
20	452	470	715	675	272	12 x M20	38	855	884	1180	1135	--	16 x M24
21	471	491	735	695	272	12 x M20	39	885	914	1210	1165	--	16 x M24
22	492	510	755	715	272	12 x M20	40	915	944	1240	1195	--	18 x M24
23	511	535	780	740	272	12 x M20	41	945	974	1270	1225	--	18 x M24
24	536	554	800	760	272	12 x M20	42	975	1004	1300	1255	--	18 x M24



Disclaimer

We reserve the right to change dimensions without prior notice.



Partlist

1	Stator housing	Red brass
2	Bellows gland	Red brass
3	Bellows gland	Red brass
5	Stator (1)	Red brass / White metal
6	Rotor (1)	Cast iron
7	Rotor housing	Red brass
8	Stator cover	Red brass
9	Driving strap	Red brass
10	Bellows (1)	Nitrile rubber
11	Pressure spring (1)	Acid proof steel
12	O-ring (1)	Nitrile rubber
13	O-ring (1)	Nitrile rubber
14	O-ring (1)	Nitrile rubber
15	Screw	Steel
16	Gasket	Fibre glass
17	Screw, flange	Acid proof steel
18	Temperature sensor (2)	Steel

Notes

- 1 Spare part
- 2 Optional item

www.cedervall.com

