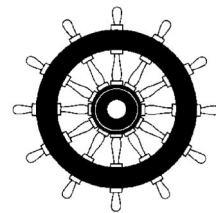


GDS101

SKIPPER GDS 101

NAVIGATION ECHO SOUNDER



Hydrographic

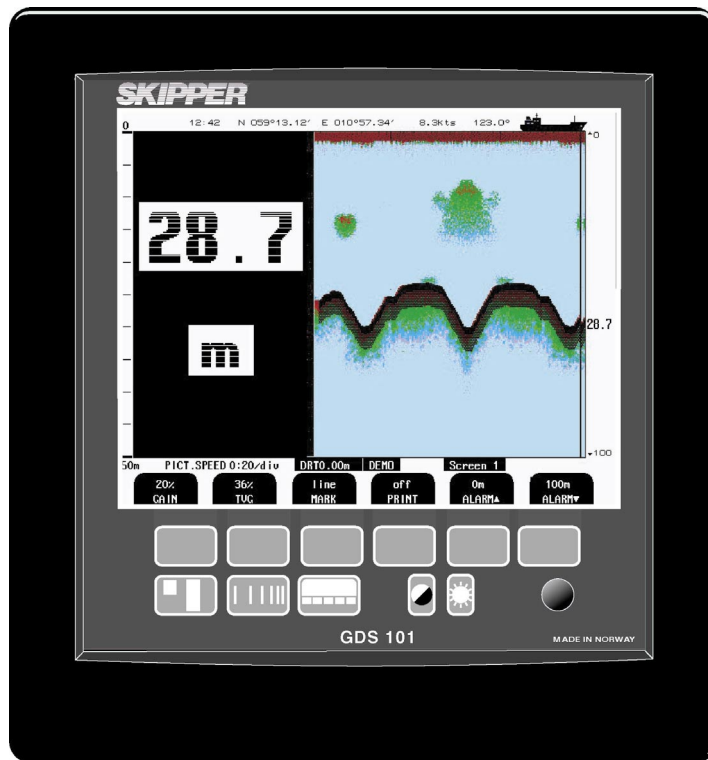
Navigation

Fishery

Speed logs

Echo sounders

Direction finders

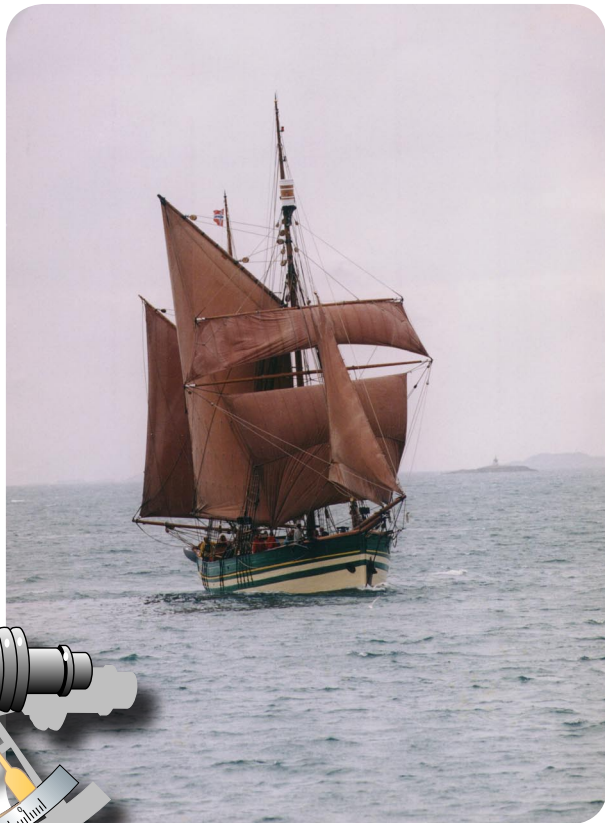
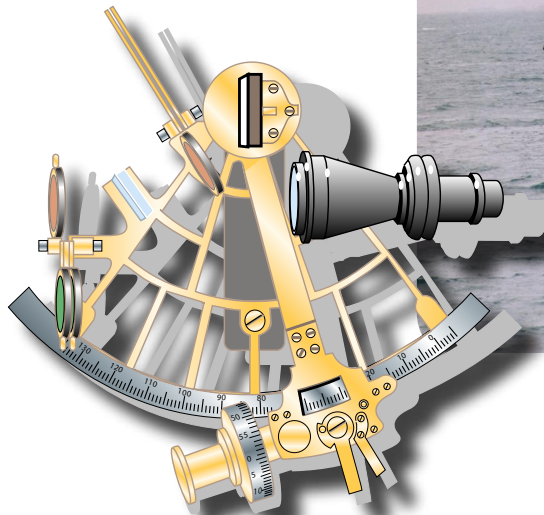


We build marine electronics for the merchant as well as the fishing fleet, based on experience, research and tradition. Our products are known worldwide for reliability, sophistication and good value for money.

"Serve you further"

e-mail :
skipper@skipper.no

www.skipper.no



GDS101

SKIPPER

Specifications

Power Supply	AC: 230V/115V 50/60Hz. DC: 20-32V
Power Consumption	50W at 24V, 70W at 230V or 115V
Display	10,4" color TFT.
Printer	External printer, Contact Skipper.
Memory	24 Hour storage.
Ranges	Selectable from 0-10m to 0-1600m.
Measuring Accuracy	Better than 1%
Frequencies	Standard, 38, 50 and 200kHz, selectable from keyboard. (Other freq. on request)
Output power	1kW, adjustable
Depth alarms	Deep and shallow water alarms
Calendar / Clock	Year-month-day / Hours-min.-sec. 24 hour system
Outputs	Trigger and bottom-pulses. Analog 4-20mA, and 0-10V for depth. Detected video. NMEA 0183 Alarm relays. Output for VGA. Output for standard PC printer. (HP)
Inputs	100/200 pulses for speed, NMEA 0183 for speed, position, heading and time.
Languages	English, French, German, Spanish, Russian, Norwegian.
Option	Remote depth indicators. Remote keyboard. Printer. Ice tank
Classification	Made acc. to IMO performance standard.
Service	Available in most major harbours, World-wide through extensive dealer network.

Overview

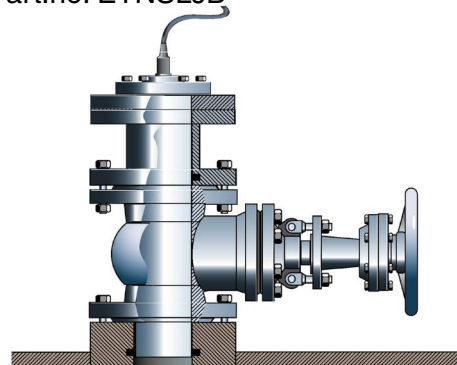
Operator unit
GDS101
Part.no:
KO-EN101C



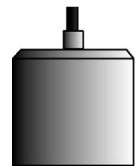
Junction box
Part.no: ZZL-01018



Gatevalve
Part.no: ETNSLJB



Transducer tank
Part.no: ETNST



IR301
Reaper
Part.no: ENIR301



IR30DIM
Remote dimmer for IR301
Part.no: IR30DIM

Skipper Electronics A/S
Ryensvingen 5
P.O.Box 151, Manglerud
0612 Oslo, Norway
www.skipper.no

Telephone +47 23 30 22 70
Telefax +47 23 30 22 71
E-mail: skipper@skipper.no
Co.reg.no: NO-965378847 -MVA

SKIPPER