

# E-FCS FLOW CONTROL SYSTEM

OPTIMIZED PERFORMANCE

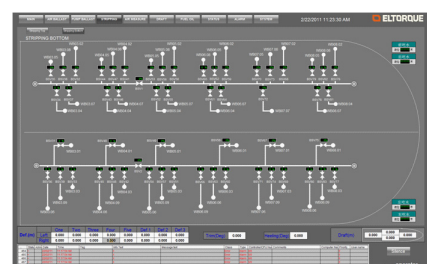
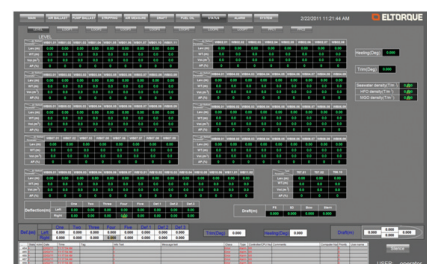
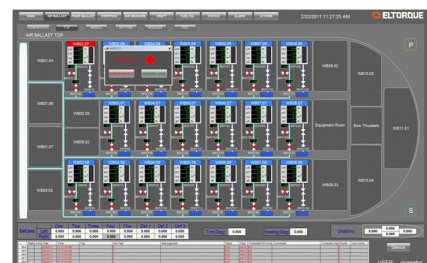
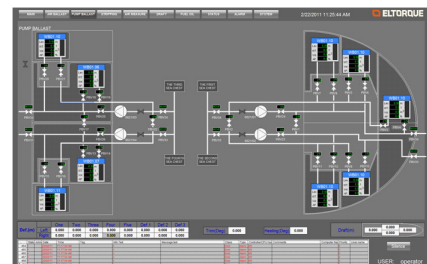
Eltorque Flow Control System is a reliable solution integrating valve control with control of level, pressure, draft and trim/heel.

**ELTORQUE** Flow Control System provides user-friendly and customized interfaces. By utilizing the real-time position feedback from the Eltorque actuator, it can give the operator full control of the flow through all parts of the installation.

## FEATURES:

### Eltorque Flow Control System:

- Customized HMI
- 100% control and feedback of actuators including configuration of torque and speed
- Analog and digital interface to sensors and pumps
- Pt100 interface to temp.sensors
- Interface to loading computer
- Interface to other systems if required
- Integrated anti-heeling system
- Integrated deck deflection system
- Redundant communication between distributed IO units
- Module based structure that allows for distribution of IO units
- Semi-automatival functionalities
- Standardized communication profiles
- Interface to all QT-Series and MT-Series actuators on fieldbus
- All part certified for maritime installation



# E-FCS SPECIFICATIONS

Art. no: 900-520/January 2013 • Copyright Eltorque 2013 ©

E-FCS	
INTERFACE ACT.	CAN Open, Modbus, Digital, Analog
MAX ACTUATORS	Unlimited
CTRL FUNCTIONS ACT.	Open / Close, Go to, Configuration of torque and speed (depend on control interface)
FEED-BACK FUNCTIONS	Open / Closed, Position, Alarm status, Error status (depend on control interface)
OTHER EQUIPMENT	Level sensors / switches, temp. sensors, flowmeters, pressure sensors and others

