

Explosion-proof Floodlight for Lamps up to 1000 W Series d 4000...

Applications:

Hazardous locations of zones 1, 2 and 21, 22, on- and offshore installations, loading stations, oil rigs, silos etc.

Design:

Housing and glass retaining frame:

From weathering resistant cast aluminium. Lateral lockable screw cap for lamp replacement. Ballast and ignitor inside the housing.

Condenser box: Mounted to the back of the floodlight.

Reflector: Made from high anodized purest aluminium.

Glass pane: Tempered safety glass resistant to temperature variations, glued into the frame.

Connection terminals:

Standard: L1+N+PE - 4mm², in case of compensated version 6mm²

Cable entries:

2 entries M25x1.5 (1 plastic gland + 1 plug)

Mounting position: Horizontal.

Mechanical installation: 1 steel bracket, turning infinitely and horizontally

d 4000 ...



II 2 G EEx de IIC

II 2 D T140-270°C

T2 - T4

IP67



flameproof enclosure, up to 1000 Watts

EC Type Test Certificate:

PTB 03 ATEX 1164

Ignition protection: d (flameproof enclosure)

Explosion protection:

II 2 G EEx de IIC T2 - T4 (zone 1)

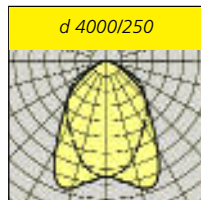
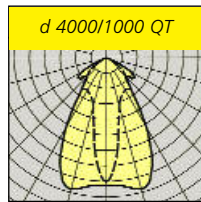
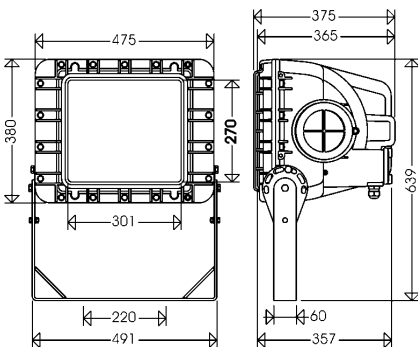
II 2 D T140-270°C (zone 21)

Admissible ambient temperature:

-20°C up to +40°C/+55°C

Rated voltage: Standard: 230V, 50 Hz:

220V or 240V, 50 Hz or 60 Hz



Type	Article no.	Temp. class	Lamps Watts	Weight appr. kg ⁶⁾
------	-------------	-------------	-------------	-------------------------------

for tungsten halogen lamps up to 1000W, socket E40

d 4000/500 QT 40000 0011 T3 1 x QT 500 W⁴⁾ 29,5

d 4000/1000 QT 40000 0012 T2 1 x QT 1000 W⁴⁾ 29,5

for high pressure discharge lamps, socket E40 with incorporated ballast and ignitor¹⁾

d 4000/250 40000 0001 T4 1 x HME 250 33,0

d 4000/250 HI/HS²⁾ 40000 0003 T4 1 x HIE/HIT/HSE/HST 250 33,0

d 4000/400 HI/HS^{2) 5)} 40000 0005 T3 1 x HIT/HST 400 33,5

d 4000/600 HS 40000 0009 T3 1 x HST 600³⁾ 38,5

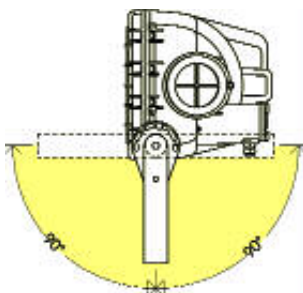
- 1) uncomp., article no. for comp. (with condenser box m 4015) see price list
- 2) only such metal halide lamps may be used which are allowed to be operated with hpsv ballasts

3) OSRAM VIALOX NAV-T600 SUPER or PHILIPS SON-T 600

4) PHILIPS IDE

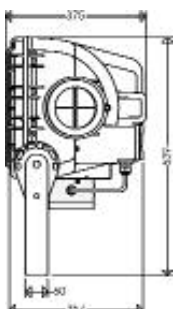
5) admissible ambient temperature +55°C

6) weights w/o packing material



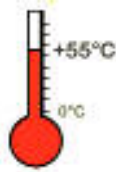
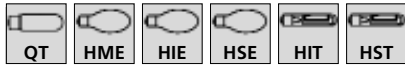
Swivelling range: ± 90°

with condenser box m 4015



for high ambient temperatures up to +55°C

Standard versions d4000/400 HI or HS up to +55°C (see before).
are certified for ambient temperatures



Type	Article no.	Temp. class	Lamps Watts	Weight appr. kg ⁴⁾
for tungsten halogen lamp, socket E40				
d4000/500QT H55	40000 0111	T2	1 x QT 500 W ³⁾	29,5
for high pressure discharge lamps up to 600W, socket E40 with incorporated ballast and ignitor¹⁾				
d4000/250 H55	40000 0101	T3	1 x HME 250	33,0
d4000/250HI/HS H55 ²⁾	40000 0103	T3	1 x HIE/HIT/HSE/HST 250	33,0

1) uncomp., article no. for comp. (with condenser box m 4015) see price list
2) only such metal halide lamps may be used which are allowed to be operated with hpsv
ballasts
3) PHILIPS IDE
4) weights w/o packing material

Further series / equipment

- hard-coating for very aggressive ambient conditions
- with bracket from stainless steel
- with different cable glands
- 2nd cable gland for mains cable looping
- in 120V version for 300W, 500W, 1000W (QT lamp JTT of brand Eye)
- with terminals up to 6mm² in case of uncomp. version

Explosiongeschützte Leuchten

Accessories / Spare Parts

Type	Article No.	
Cable entries / Cable glands		
2601	90117 9004	Ex-proof plastic cable gland M25 x 1,5 with joint gasket
2603	90118 9004	Ex-proof plastic plug M25 x 1,5 with joint gasket
2595	90117 9003	Ex-proof cable gland M25 x 1,5, heat resistant
2605	90118 9005	Ex-proof plug M25 x 1,5, heat resistant