

# Planned Maintenance System PMS

- Preset Machinery Data
- Preset Work Activities
- Real-time Work Schedule and History
- Stock Control Integration
- Document Integration
- Synchronization
- Printable Maintenance Cards
- Work Instructions
- Vessel-specific and Fleet-wide Administration
- Task List



## Reliable PMS

### General Features

- Automatic Updates
- Efficient Synchronization
- Central Backup
- User Roles
- Longterm Support
- Reporting
- Classification Type Approved

### General Services

- Software Development
- Software as a Service
- Project Management
- Training

- **Fleet-wide parameter settings** ensuring consistency within your operations.
- **Preset** with **data** and **planned maintenance activities settings** for machinery installed across the fleet.
- Provides **real-time overview** of maintenance activity states (per part, product, vessel and for the entire fleet).
- Allows **forecasting** of required spare parts, tools and manpower.
- **Reports** activities **completion to the office** upon synchronization.
- **Modifications** of company-specific PMS settings are **synchronized directly** to the vessels.
- Task list for **managing unplanned tasks**.
- **Running hours** recording and reporting.

### General Information

- [○ Company and Products](#)
- [○ System and Data Security](#)
- [○ Evaluation Guide](#)
- [○ System Requirements](#)

### mespas R5 Modules

- [● Planned Maintenance PMS](#)
- [○ E-Procurement](#)
- [○ Stock Control](#)
- [○ Budgeting](#)
- [○ Document Management](#)
- [○ Form Management](#)
- [○ TMSA](#)



**Daniel Gsponer, Dipl.Ing.FH**  
CTO MESPAS AG

mespas R5 PMS fulfills industry standards and meets leading shipowners' expectations. Additionally it allows to compare the performance of important components across your entire fleet.

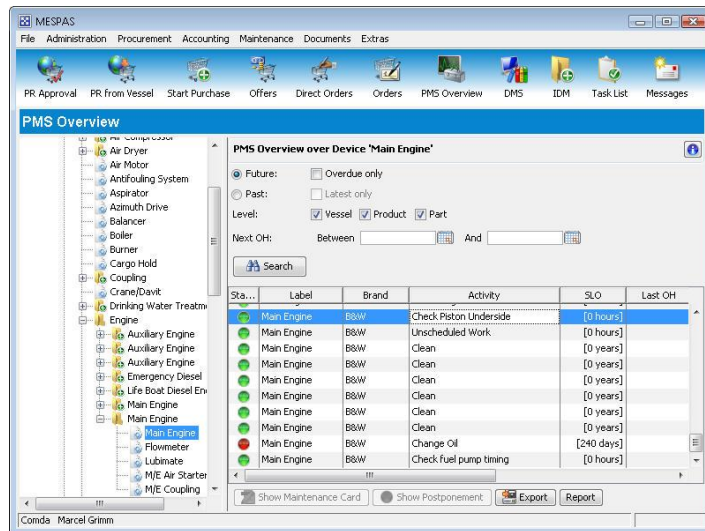
mespas R5 Fleet Management Software

# Planned Maintenance System PMS

## INTEGRATED AND CUSTOMIZED

mespas R5 PMS allows for managing up-coming maintenance, part and personnel availability as well as monitoring technical performance. This leads to a **cost effective operation** and facilitates detecting weak spots across your fleet.

mespas R5 lets you calculate planned maintenance activities based on equipment running hours and/or time intervals. **Linked documents**, such as maintenance cards, work instructions and service letters put information close to where it's needed.



## SYSTEM FEATURES

### The mespas R5 software...

- manages up-coming maintenance based on running hours or time intervals.
- links PMS activities to maintenance cards, work instructions and service letters.

### The shipowner's office users...

- set fleet-wide parameters such as maintenance intervals and responsibilities.
- administer work and safety instructions and maintenance cards.
- monitor maintenance activities performance across fleet, for a vessel or for a vessel's specific area.
- filter/compare work and machinery performance between vessels.

### The shipowner's vessel users...

- view up-coming activities.
- report completion of planned activities and unscheduled work.
- list relevant information for Classification Societies.
- enter machinery running hours (MRH).
- print planned maintenance work reports.

MESPAS AG  
 Heinrichstrasse 239  
 CH-8005 Zürich, Switzerland  
 Phone +41 44 271 0320  
 Fax +41 44 271 7944  
 newsletter@mespas.com  
 www.mespas.com

### Manage your fleet, not just your ships...

MESPAS is a Swiss-based software solution and service provider for managing technical installations such as marine fleets and industrial installations.

It was founded in 2000 by marine engineers, software engineers and venture capitalists.