



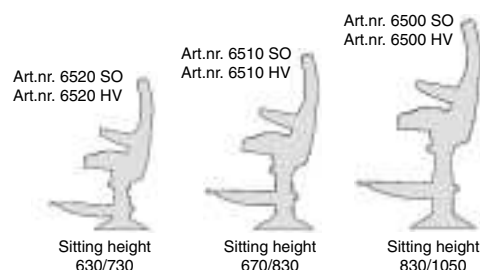
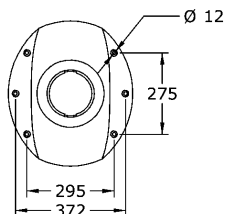
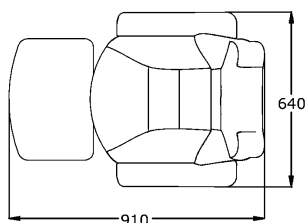
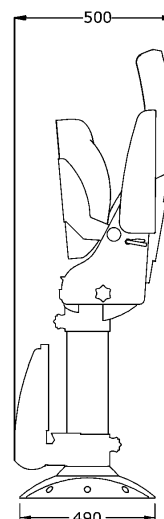
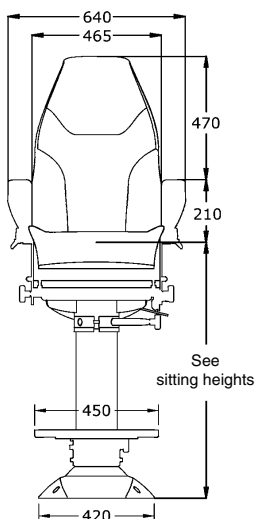
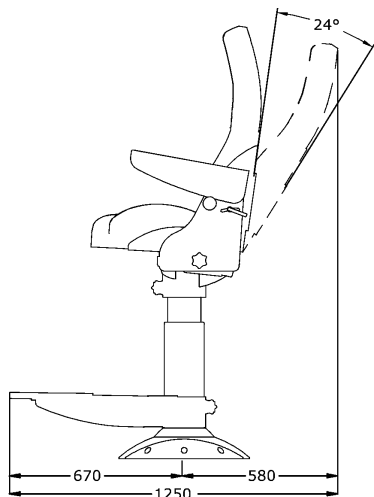
1500 Yacht



Art. No: 6500 SO
Art. No: 6510 SO
Art. No: 6520 SO

Art. No: 6500 HV
Art. No: 6510 HV
Art. No: 6520 HV

Nor-Sap 1500 Yacht



Nor-Sap 1500 Yacht

The Nor-Sap 1500 Yacht confirms to high standards of economic design and is mounted on a strong $\varnothing 150$ mm telescoping column incorporating shock absorber and height adjustment. Seat and arm rests are upholstered as standard in leather. Other colors or fabrics available upon request. Crafted of aluminium.

Functions:

- Adjustable seat and back.
- Adjustable flip up arm rests .
- Backward/forward adjustments, seat swivels 360 degrees.
- Foot rest folds up.
- Entire seat folds up.
- Height adjustment in column.
- Shock absorber in column.

Weight: 49 kg

Coated white (HV)

- Nor-Sap 1500 Yacht sittingh.: 830/1050 :** Art. No: 6500 HV
Nor-Sap 1500 Yacht sittingh.: 670/830 : Art. No: 6510 HV
Nor-Sap 1500 Yacht sittingh.: 630/730 : Art. No: 6520 HV

Coated black (SO)

- Nor-Sap 1500 Yacht sittingh.: 830/1050 :** Art. No: 6500 SO
Nor-Sap 1500 Yacht sittingh.: 670/830 : Art. No: 6510 SO
Nor-Sap 1500 Yacht sittingh.: 630/730 : Art. No: 6520 SO

State leather color on order

- Seat cover:** **Fabric :** Art. No: 6470
Water repellent : Art. No: 6451
Deck Rail: See brochure

AS Sørlandets Aluminiumprodukter

Box 7005, Vestheiene
 N-4674 Kristiansand
 Norway

Telephone: (47) 38 18 52 00
 Telefaks: (47) 38 18 20 86
 E-mail: sale@norsap.no
 Internett: www.norsap.no



Dealer: